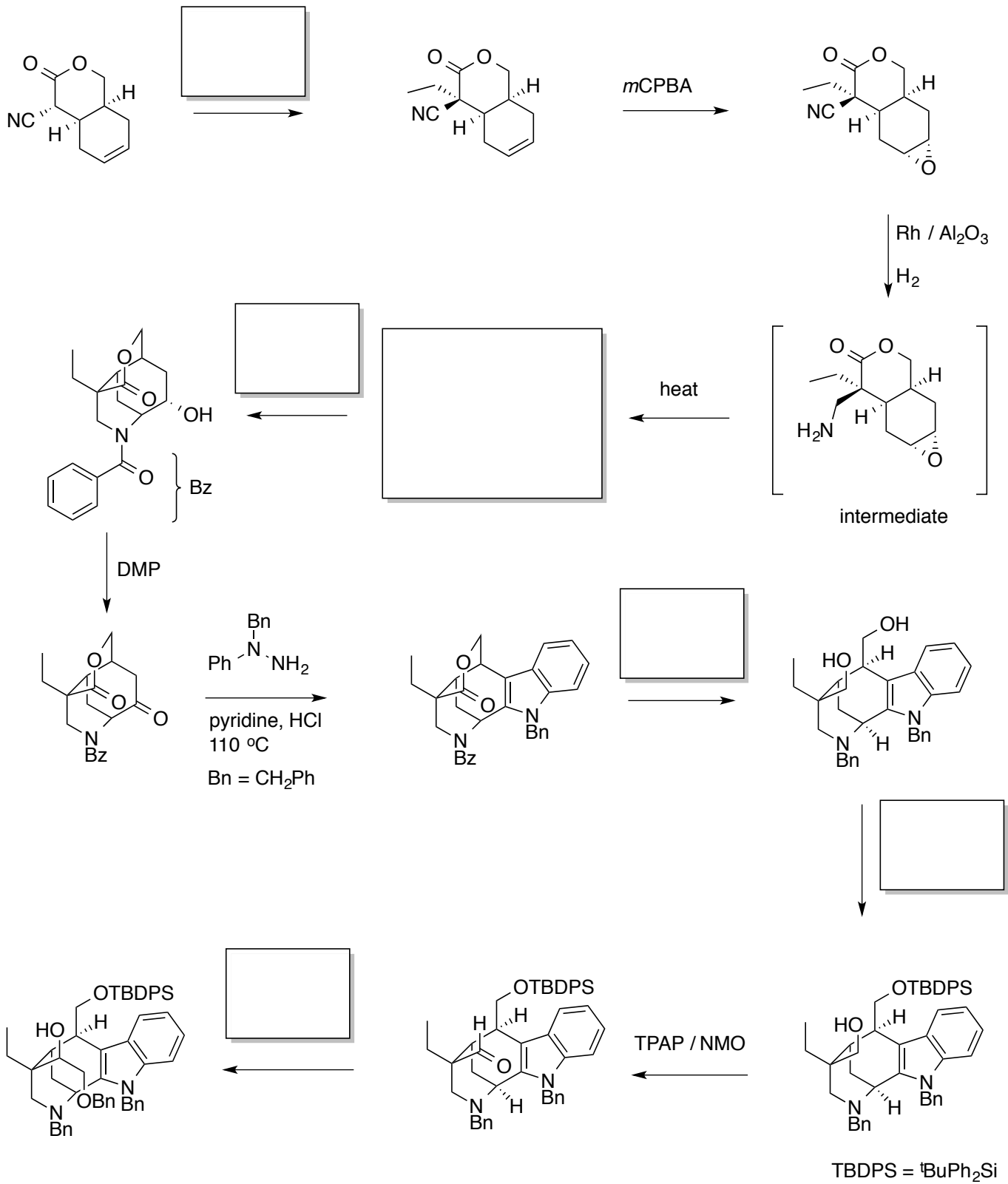


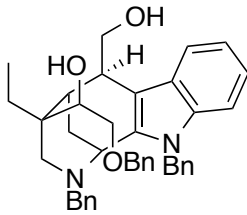
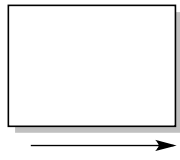
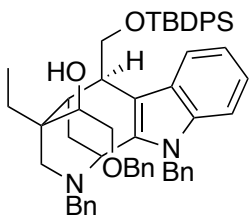
Synthesis of scholarisine A

Amos Smith, University of Pennsylvania, 2012

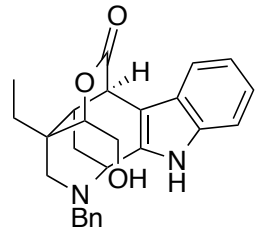
Isolated from leaves of *Alstonia scholaris*; the Devil tree of south Asia, used in traditional medicine.

Related compounds show promise in type-II diabetes intervention.

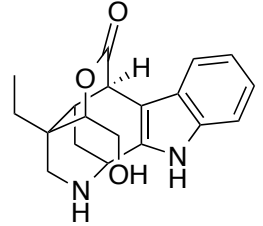




1) IBX / THF
2) TPAP / NMO
3) AlCl₃

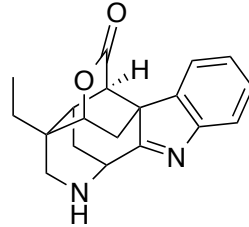
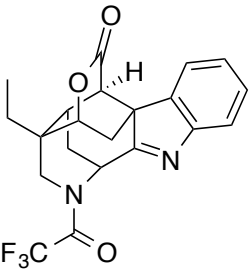
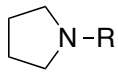
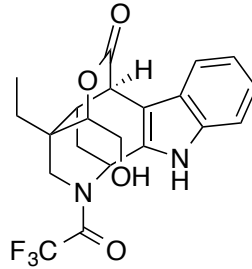
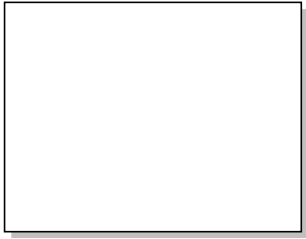


Pd(OH)₂ / C
NH₄HCO₂ / MeOH

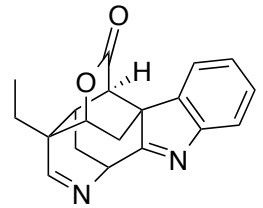


MsCl / NEt₃

Ms = CH₃SO₂



PhIO



scholarisine A